

SURESEAL



PIPE SYSTEMS

SURELOCK FLANGES SURESEAL PIPE SYSTEMS

web: www.sureseal.com.au e-mail: peter@sureseal.com.au

tel: (08) 9312 1570 fax: (08) 9312 1748

Factory Unit 14
16 Salpietro Street
Bibra Lake, 6163
Western Australia

ABN 69 805 629 300

Locally developed interlocking backing ring

Cost effective

Corrosion resistant

Manufactured in glass reinforced polypropylene and nylon materials
for selected use in various chemical environments

Conform to ANSI B16.5 150 lbs and BS 4504 PN10 drilling standards

Internal ring diameter suitable for most thermoplastic and thermoset pipe
systems

Simple to install or replace without having to cut pipe lines

Ideal for fitment to short spool
fabrications after welding

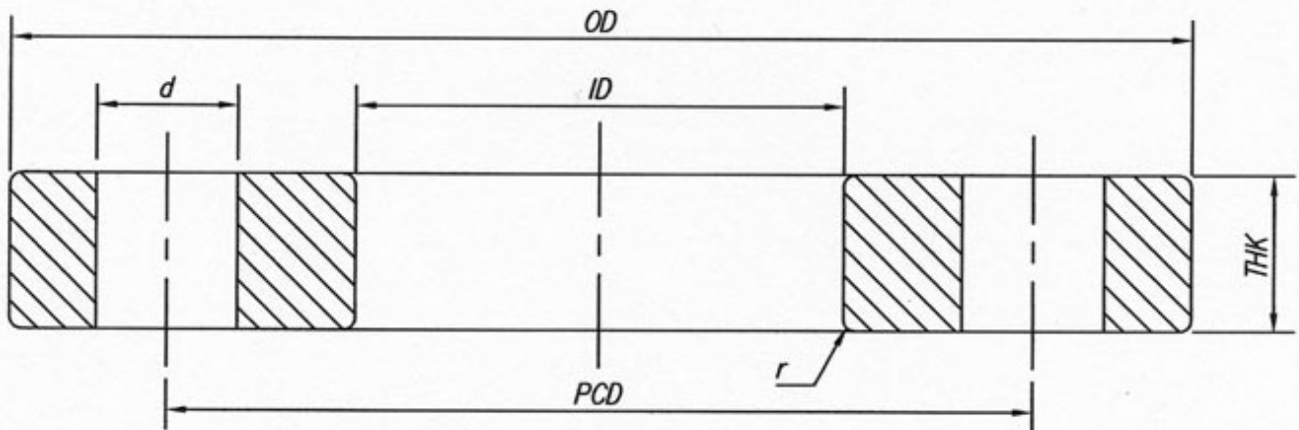
Split backing rings can be
doubled up for higher
pressure duties



Colour coded and embossed
markings making for easy identification and traceability

TECHNICAL DATA

CODE	GFPP 30 - BLACK	GFN 30 - GREY
MATERIAL PROPERTIES	POLYPROPYLENE HOMOPOLYMER HEAT STABILISED GRADE	NYLON 66 MODIFIED FLOW GRADE
Tensile Strength (at break)	96 MPa	155 MPa
Tensile Elongation (at break)	4.5 %	5 %
Flexural Strength	135 MPa	240 MPa
Flexural Modulus	5.0 GPa	7.7 GPa
Heat Deflection Temperature	160 °C	251 °C
Glass Content	30 %	30 %



FLANGE DRILLING TABLES BS 4504 PN 10/DIN 2501/SABS 1123

NB	FLANGE				DRILLING			Recommended bolt torque	Maximum bolt torque
	OD	ID	THK	r	No. of holes	d	PCD	Nm	Nm
25	115	43	20	1.5	4	14	85	10	20
40	150	62	25	2	4	18	110	15	25
50	165	78	25	2	4	18	125	20	30
80	200	110	30	2	8	18	160	25	35
100	220	135	30	2	8	18	180	25	35
150	285	188	35	3	8	22	240.5	30	40

FLANGE DRILLING TABLE ANSI B16.5 150lbs

NB	FLANGE				DRILLING			Recommended bolt torque	Maximum bolt torque
	OD	ID	THK	r	No. of holes	d	PCD	Nm	Nm
25	108	43	20	1.5	4	16	79	10	20
40	127	62	25	2	4	16	98	15	25
50	165	78	25	2	4	19	121	20	30
80	191	110	30	2	4	19	152	25	35
100	220	135	30	2	8	19	190	25	35
150	285	188	35	3	8	22	240.5	30	40

RECOMMENDATIONS

1. When using SURELOCK Backing Ring Flanges with P.V.C. stub flanges, the recommended bolt torque must be reduced by 25%.
2. Backing ring joint lines of opposing flanges should be orientated at 90° to one another.
3. SURESEAL GASKETS complement the performance of SURELOCK FLANGES.